



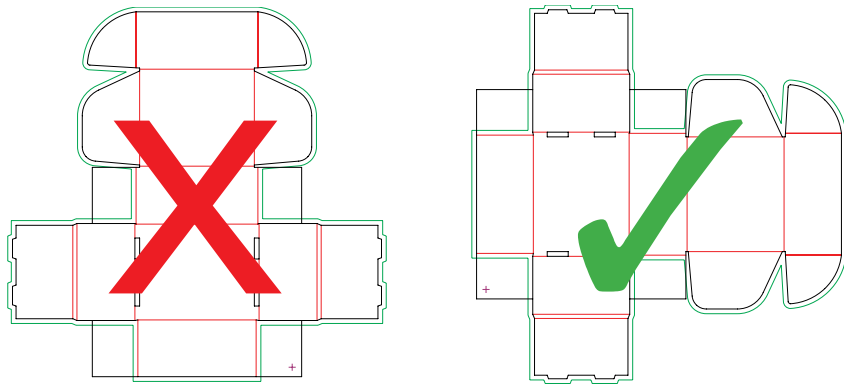
COMPANYBOX®

Graphics Guidelines



01. DO NOT ROTATE STRUCTURAL DRAWING

The unique structural template (CAD Dieline) we send you to build your art has been designed to flow through our system smoothly and accurately. It is very important that this template not be altered or rotated. The printed art is cut out based on the original template orientation. Rotating the dieline in your artwork may yield unintended results.



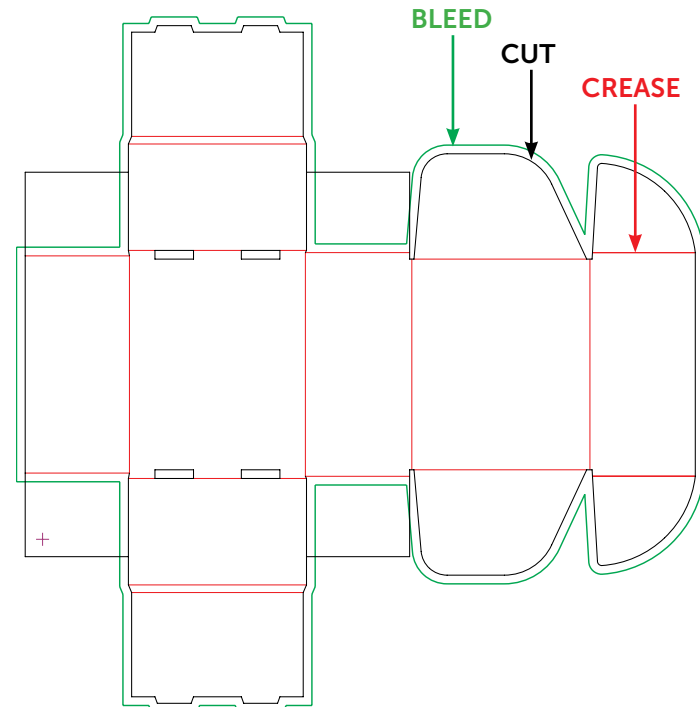
02. COLOR SETTINGS

All artwork should be converted to CMYK. Please convert any RGB, Hexidecimal, spot colors colors and images to CMYK to avoid unexpected color shifting.

03. FILE CONTAINS DIELINE LAYER

In order to ensure your custom packaging cuts correctly, it is very important that the unique structural dieline we send you is included as part of the print file. The structural drawing will contain Spot Colors for the cut and crease lines in the Swatch menu. These colors are used to tell the cutting and creasing machines how to convert your unique product. **NOTE: DO NOT flatten your artwork with this die layer. The die line MUST remain on a separate layer for it to be removed at the printing stage.**

IMPORTANT: Do not change these to CMYK colors because they will print on your box or label.



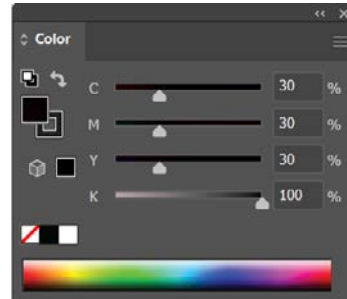


04. BLACK INK SATURATION

Too much ink in any one area can lead to printing and drying issues, which affect everything from how quickly your project can be printed, to possible issues in the cutting and finishing processes. Too much ink saturation can lead to other problems like ink smearing and smudging. For instance, black elements built using 100% Black, 100% Cyan, 100% Magenta and 100% Yellow have ink coverage of 400% which will not cure properly and result in quality and production issues. Using a color build of 100% Black, 30% Cyan, 30% Magenta and 30% Yellow, you end up with a similar result without the print issues. Black text should be 0%, 0%, 0%, 100%.

05. RICH BLACK

If your art includes black, we recommend it's built as a rich black with 30% cyan (C), 30% magenta (M), 30% yellow (Y) and 100% black (K). For best results, include a .5pt stroke of 100% black (K) to avoid print overspray.



06. FILE FORMAT

The CompanyBox online builder accepts PDF, JPG and PNG files. It is best to use a vector-based software application such as Adobe Illustrator for building art files, and saving/exporting your native file in PDF format before uploading to CompanyBox.com. If you are sending files to our graphics Department, please send layered working files in either .AI or .PSD formats.

07. FONTS & TYPE

We recommend using 12 point and larger for fonts, and using a heavier weight for text that is reversed-out. All type should be outlined in your final artwork file. Fonts below 12 point may not print legibly, especially if a font is thin (or features of a font are thin, like serifs or cross bars). When reversing type, use one weight heavier than the weight you intended to use. Avoid specifying small trademark and register mark symbols to print in reverse, as they may fill in when printed.

08. CONVERT ALL TEXT TO OUTLINES

In order to ensure your custom packaging prints correctly, we require that all fonts be converted to outlines.



09. BLEED

Final artwork files must maintain a minimum bleed of .125" (1/8") on all edges and into glue flap.

IMPORTANT: The die line provided includes a green bleed line. Please be sure your art extends out to that green bleed line.



10. SAFE AREA

Margins, rule outlines, or copy that does not bleed needs to be no less than .125" (1/8") away from dieline, creases and scores.

11. UPC/BARCODES

UPC-A type barcodes need to be at least approx. 2.2" wide. We recommend all barcodes to be at least .5" (1/2") tall.

You will notice a + on the die line. CompanyBox adds a small QR code to aid in tracking through the production process. This QR code is not visible when the box is folded.

12. IMAGE RESOLUTION

Check image resolution in order to provide the best quality print. If images are at a resolution of 150 dpi or lower at 100% scale this can result in a loss of sharpness and "pixelated" look. Straight lines will have a "staircase" effect. For best results, all artwork and image resolution should be no less than 300 dpi. You should use vector art whenever possible for clean printing.

High Res
Low-Res

13. PLACED IMAGES

All images should be embedded into your artwork file PDF. Make sure placed images have the correct file extensions: ".tiff" or ".eps" at the end (e.g., "Image.tiff" or "Image.eps"). Include only the page layout documents and the supporting files required for your project. Place graphics at 100%. Images placed at larger than 100% may look blurry or "pixelated". Placed images and artwork should be in the CMYK color space.

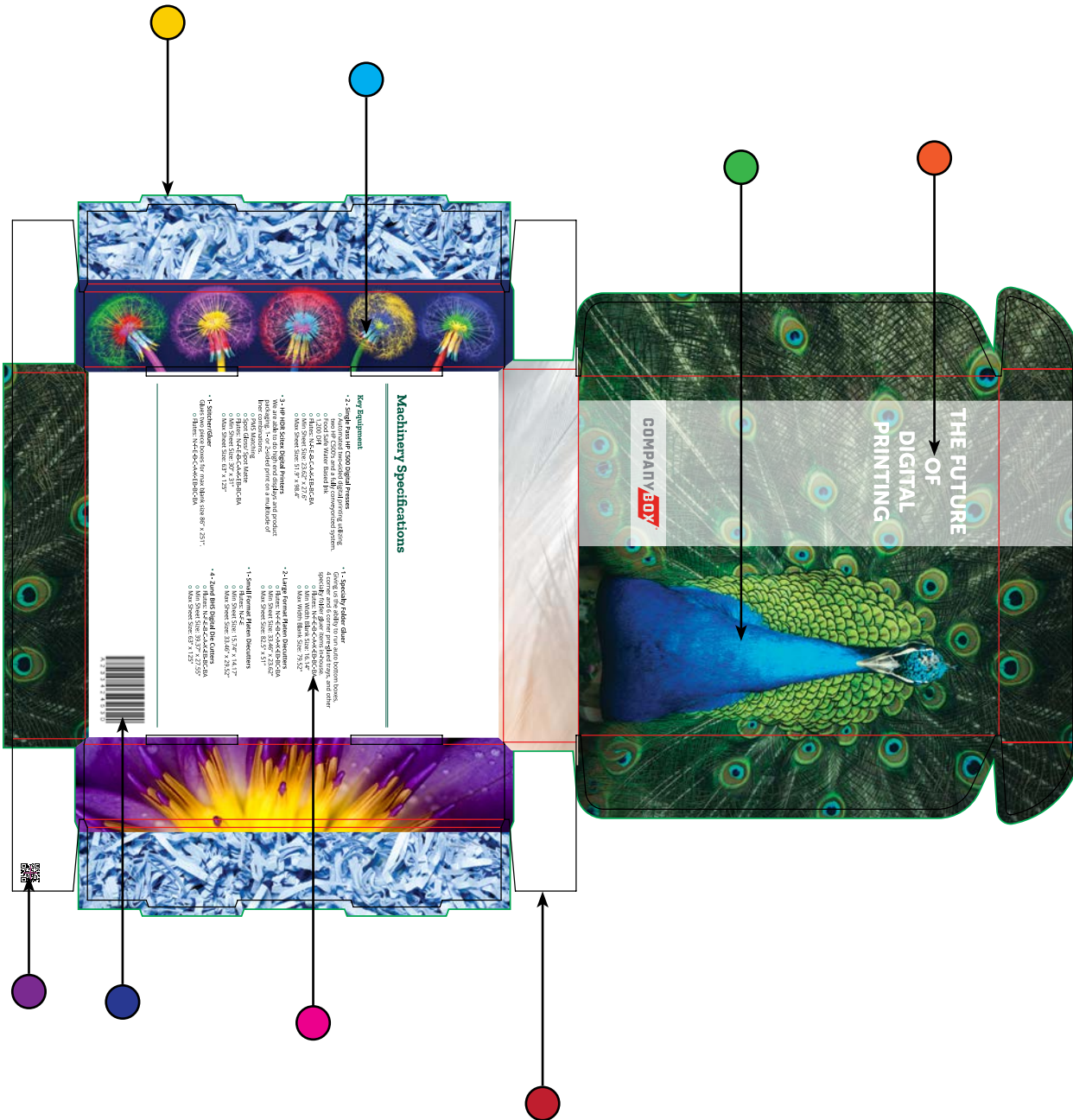


Image placed at 100%

Image placed at greater than 100%



Quick Notes



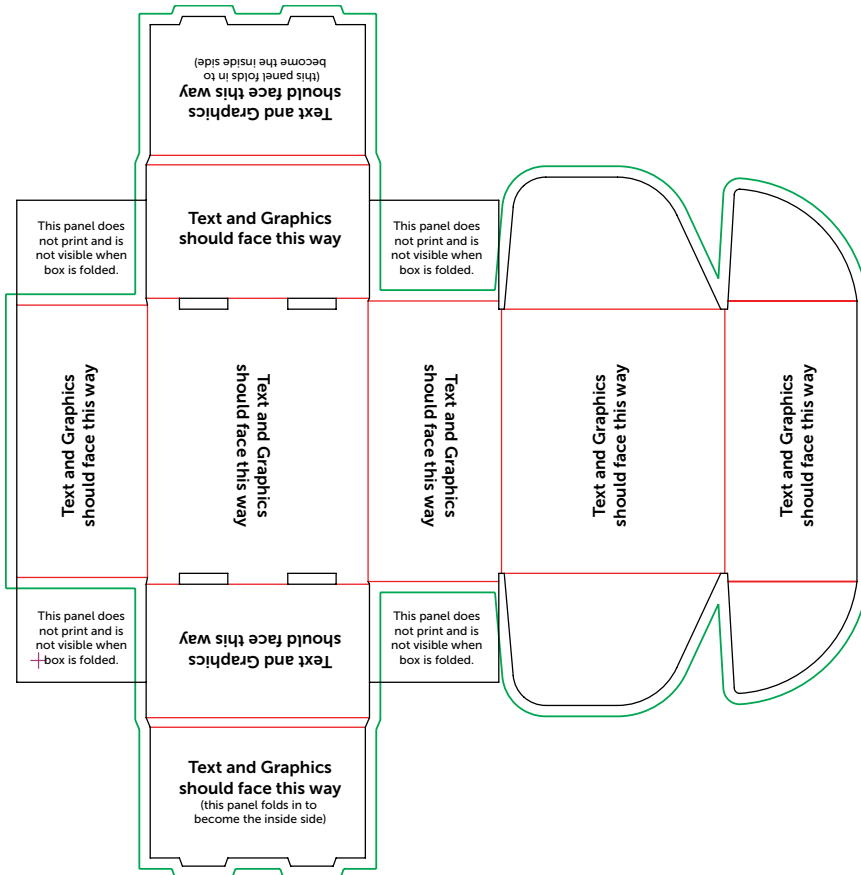
- BLEED**
Minimum .25" (1/4th-inch) bleed on all sides indicated by the green bleed line.
- REVERSE-OUT TEXT**
Heavier font weight for legibility.
- COLORS CONVERTED TO CMYK**
All artwork, including placed images, should be in the CMYK color space.
- PLACED IMAGE**
CMYK Image at 100% scale and 300dpi resolution.
- BARCODE**
Minimum 150% size (approx. 2.2" wide) and at least .5" (1/2-inch) tall.
- QR CODE**
.6" QR code used for production tracking. Will not be visible when the box is assembled.
- FONT SIZE**
Minimum 12pt font size is recommended.
- BLACK DENSITY**
Rich black is set to 30% cyan (C), 30% magenta (M), 30% yellow (Y), and 100% black (K).
- FILE CONTAINS DIELINE LAYER**
Die-line layer must be present in final artwork. Do not rotate or alter.



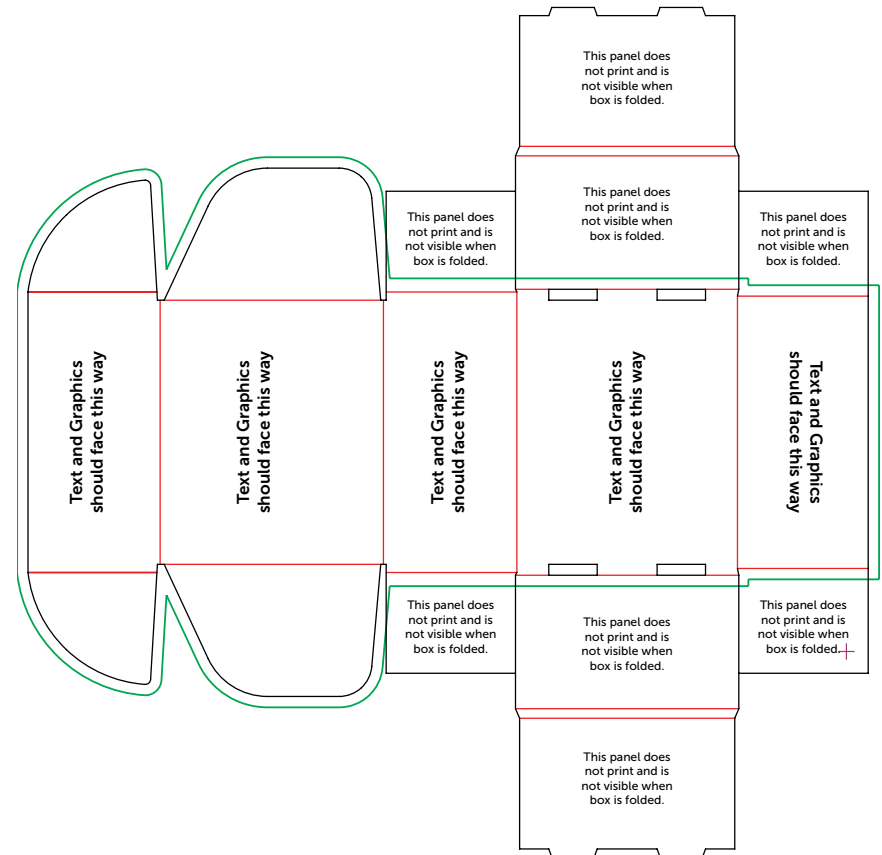
Text and Graphic Orientation

Based on how each box folds, this is the suggested art and text orientation. Please contact customer service if you have questions.

EAR LOCK MAILER



OUTSIDE



INSIDE

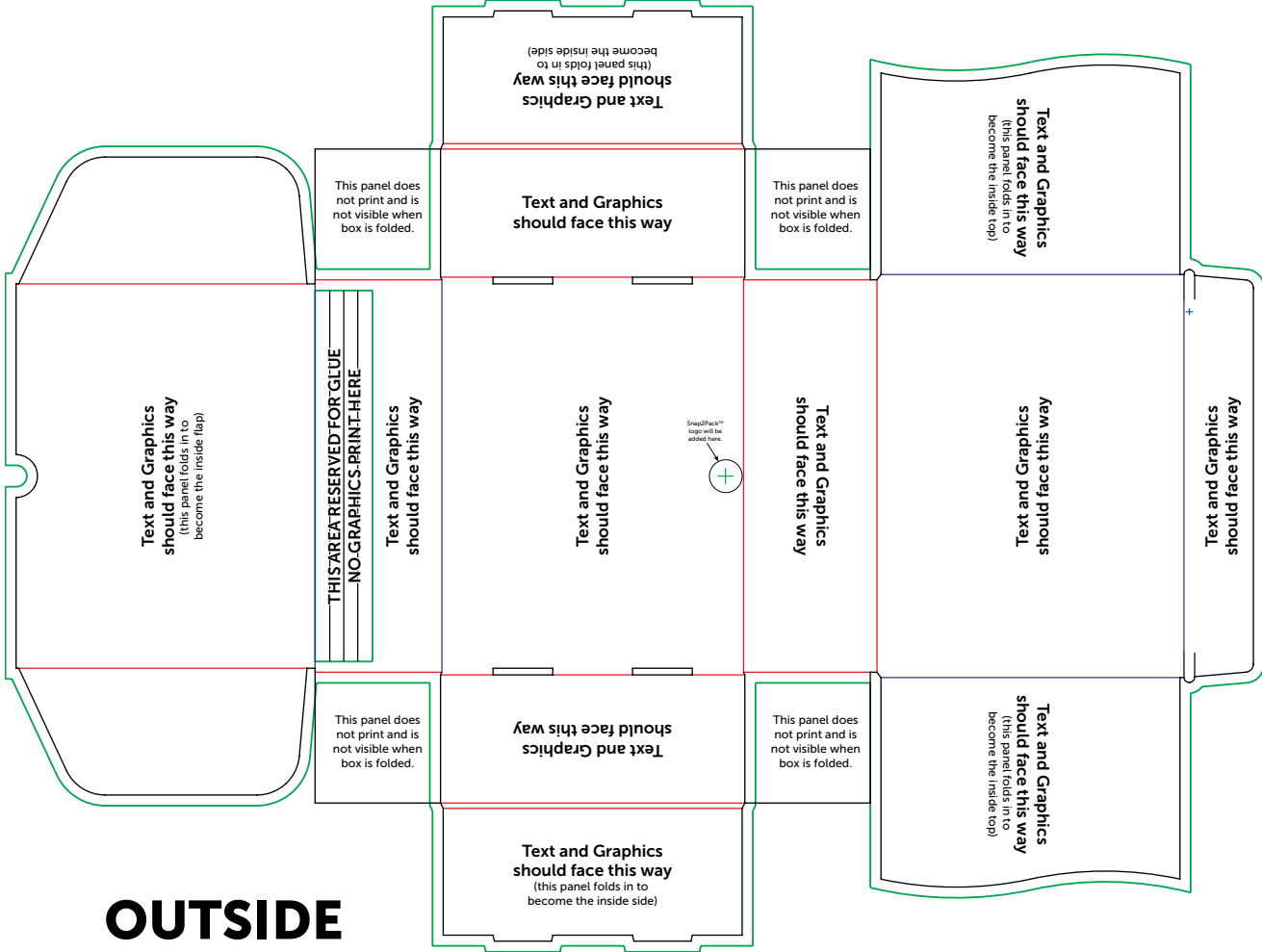


Text and Graphic Orientation

Based on how each box folds, this is the suggested art and text orientation. Please contact customer service if you have questions.

SNAP2PACK™

NOTE: The **SNAP2PACK™** PATENT PENDING logo will be added to all Snap2Pack orders where the green + is on the bottom of the box.



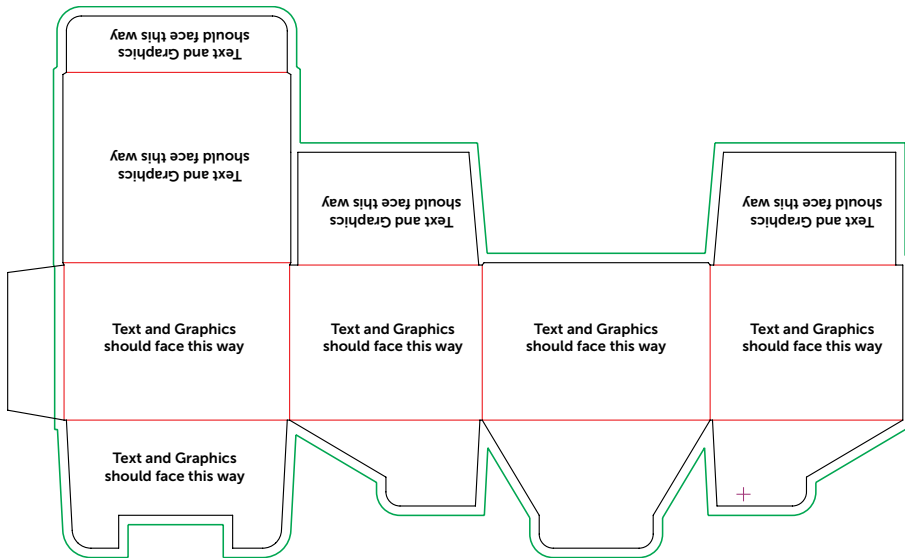
*Snap2Pack boxes do not print double-sided.



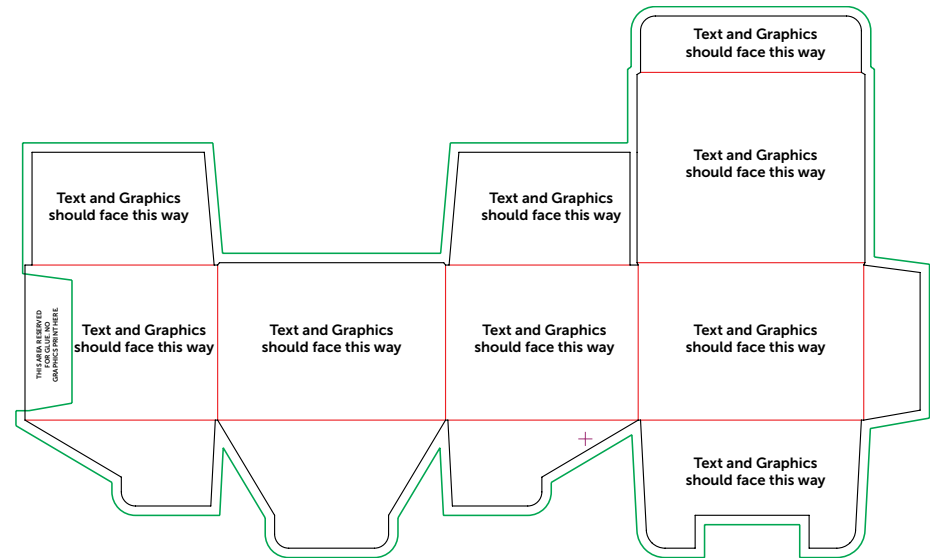
Text and Graphic Orientation

Based on how each box folds, this is the suggested art and text orientation. Please contact customer service if you have questions.

TUCK TOP MAILER



OUTSIDE



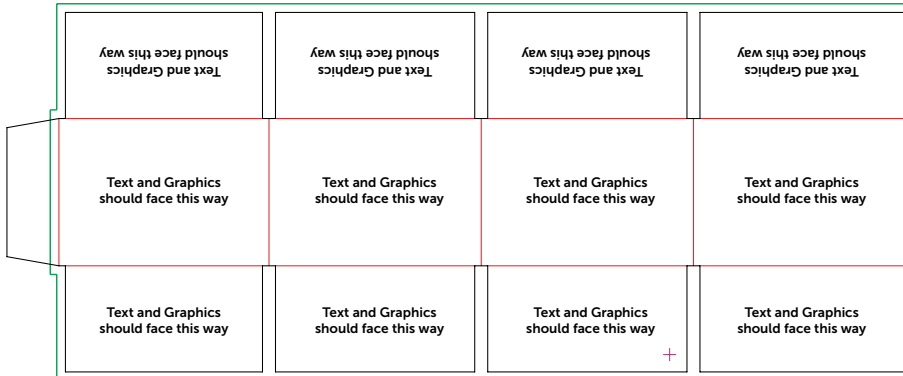
INSIDE



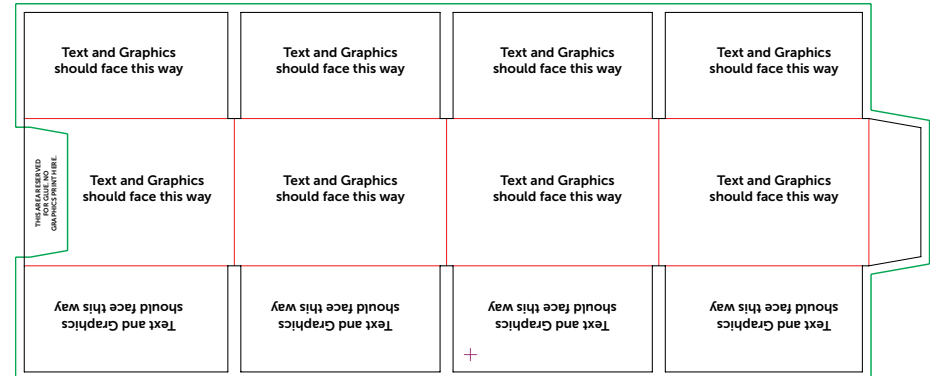
Text and Graphic Orientation

Based on how each box folds, this is the suggested art and text orientation. Please contact customer service if you have questions.

REGULAR SLOTTED CARTON



OUTSIDE



INSIDE